

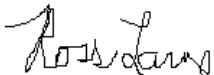
December 15, 2025

To the Madison Township Trustees; Sam Welch, Austin Brown, Ryan Smith

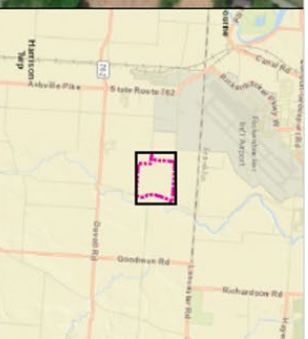
I am Ross Larue, a resident of Madison Township and I would like to bring to your attention the possibility of a historically significant cluster of pre-contact Indigenous Native American earthworks, mounds and campsite/villages in our Township. The Ohio Valley region, including tributaries of the Ohio River such as the Scioto River and the Walnut Creek Watershed has extensive documentation of these early inhabitants. Madison Township has documented mounds, village sites and evidence of tools and weapons. Along Walnut Creek, which would have provided many resources, we find examples of encampments and gathering sites in the high areas along the creek such as the parcels that are being considered for rezoning.

The initial limited archaeological survey of the area commissioned by CT/Anduril confirms that there were two likely encampment/staging areas used in their early hunts that you can see on page two (areas in light orange). Here they found many examples of flakes, shatter and other pieces of flint consistent with making tools and weapons. These two areas are on the Scarbrough property (just east of the woods) and on the land that is being requested for rezoning (the Sunshine and Smoot property), both near Walnut Creek on the high ground. Interestingly, using LiDAR (Light Detection and Ranging) which uses pulsed laser light, we can generate precise 3D maps of the Earth's surface. This has allowed us to identify not just known mounds but the location of previously unreported earthworks including a potential crescent mound just south of the Scarbrough property, a potential mound in the woods on Scarbrough and an area of interest of potential encampment which also maps to the discovery of many artifacts indicating semi or permanent settlements. While it will take more work to confirm, the LiDAR scans also suggest the potential for additional earthworks in the area. On page three I would like to point out documented mounds including the Teegardin Mound and the Uros Mound and village site as well as the new areas of interest. What is interesting is the old survey map by Mills indicates the potential of mounds and earthworks in the area which modern LiDAR appears to confirm. If this is a larger complex of earthworks and mounds, this could potentially put Madison Township as a significant historical site of the Indigenous Native Americans as seen in page four. We should be careful to preserve our rich history of Madison Township and these unique sites.

Therefore, I respectfully ask the trustees to deny the rezoning request on Dec 18th. These findings need investigation and potential protection so that future generations can enjoy and respect those who inhabited Madison township long before Columbus. By denying this rezoning request, we can affect a pause on the destruction of the woods which could contain mounds/earthworks as well as gather more information about what appears to be a site of early occupation and map out a plan to protect Madison Township's heritage.

A handwritten signature in black ink, appearing to read "Ross Larue". The signature is stylized with a large initial "R" and a long, sweeping underline.

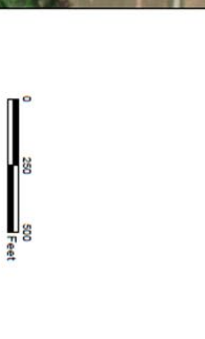
Ross Larue



Legend

-
- Project Area
 - Previous OALs
 - New OALs
 - OAL Additions
 - Surface Collected Area
 - Visually Inspected Area
 - 25 ft to 50 ft STU Interval
 - 100-ft STU Interval
 - Streams
 - Wetlands
 - Photo Location

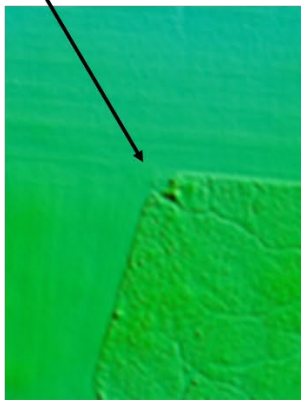
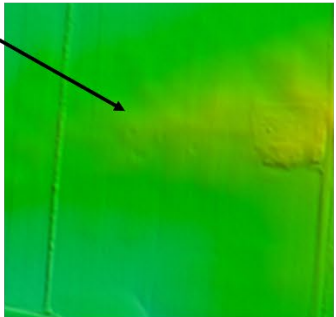
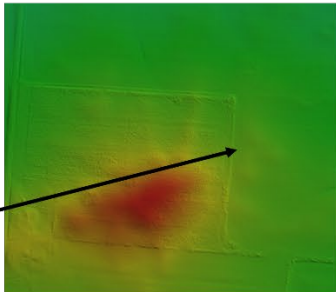
Note:
Standard 50-ft interval used in unhatched areas.



 Latham & Associates, Inc.	Archaeological Methodology Schematic		Date: Aug. 2025
	Approved by: MW	LIA No. 25-0239	Figure 13

Sheet 020239-13.dwg by author
 10/18/2025

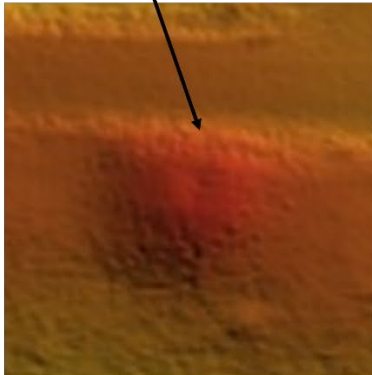
Archeological Atlas of
Ohio - Mills Map of 1914



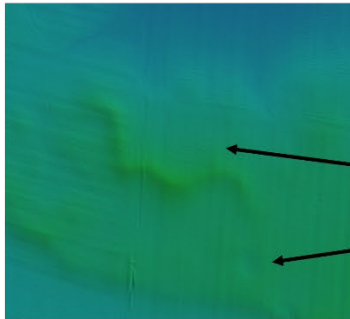
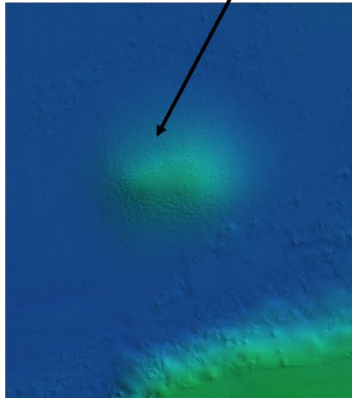
Anduril Mound



Teegarden Mound



Uros Mound and camp



Crescent Mound



1957 crop halo



LiDAR scan of the same area